

Vishnu Performance Systems

Uploading Map Files To XEDE with XUpdate Version 1.0 Beta (Early Release)

Step 1

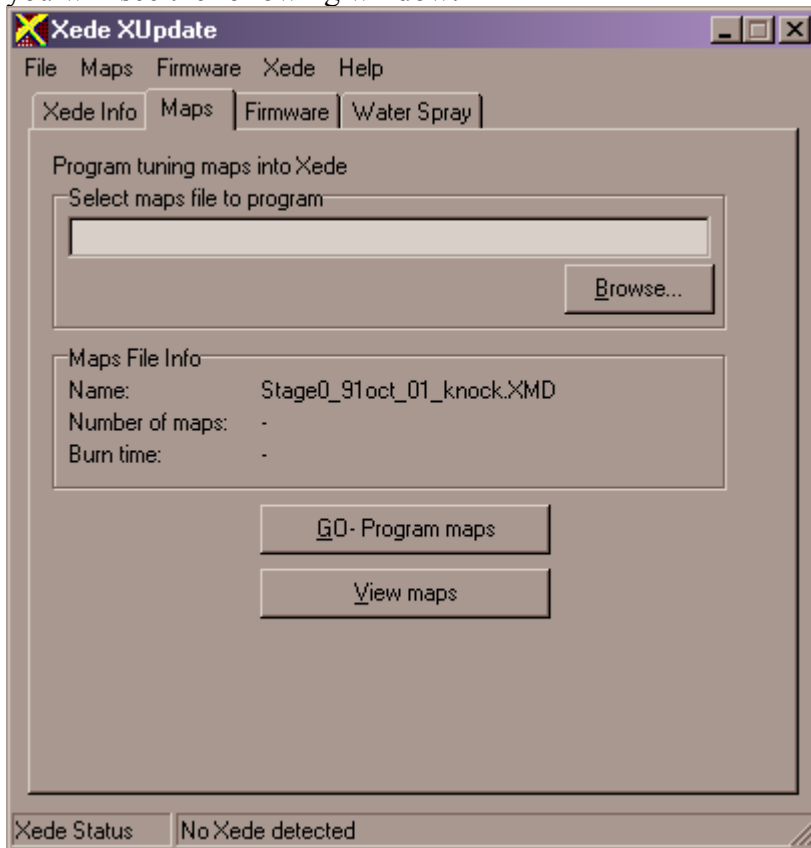
Connect to XEDE

Make sure ignition power is “ON” and ensure a good serial cable connection between the XEDE and the serial port in your laptop.

Step 1

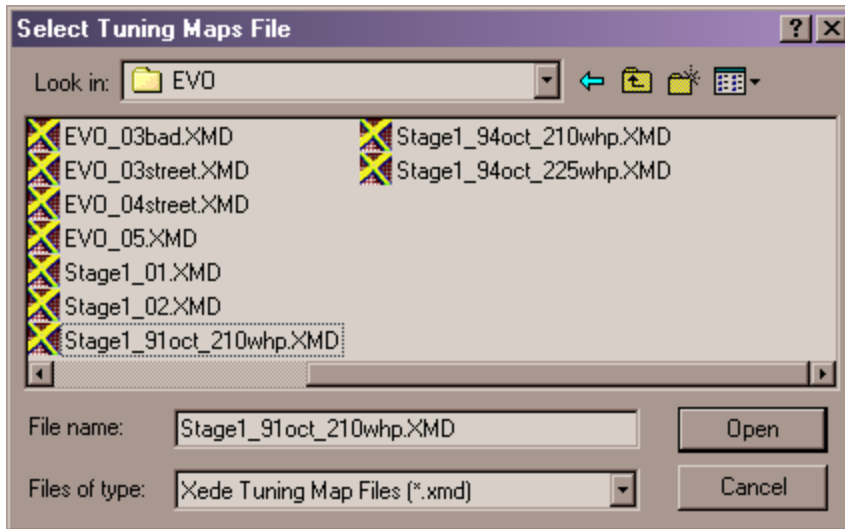
Launch XUpdate software

If you do not have it, it can be downloaded, at no cost, from our website at www.vishnutuning.com. Do not download the XMap tuning software as it will require an unlocking code which is only granted upon its purchase. Once XUpdate is launched, you will see the following window:



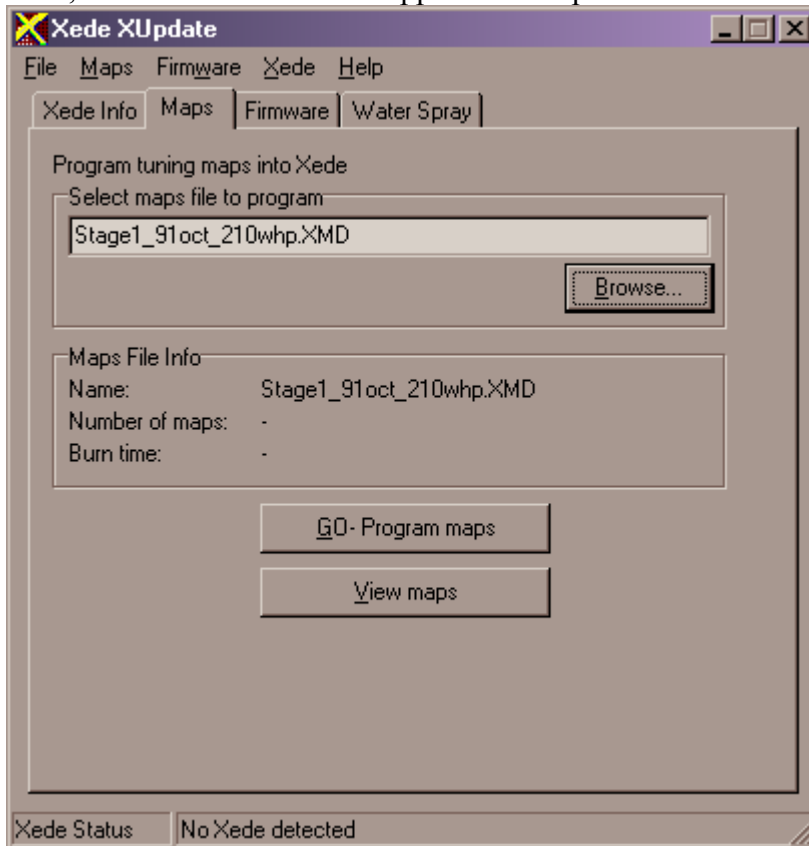
Step 2

Select and open desired map file using the “Browse” button.



Step 3

Now, the selected file should appear in the space below.

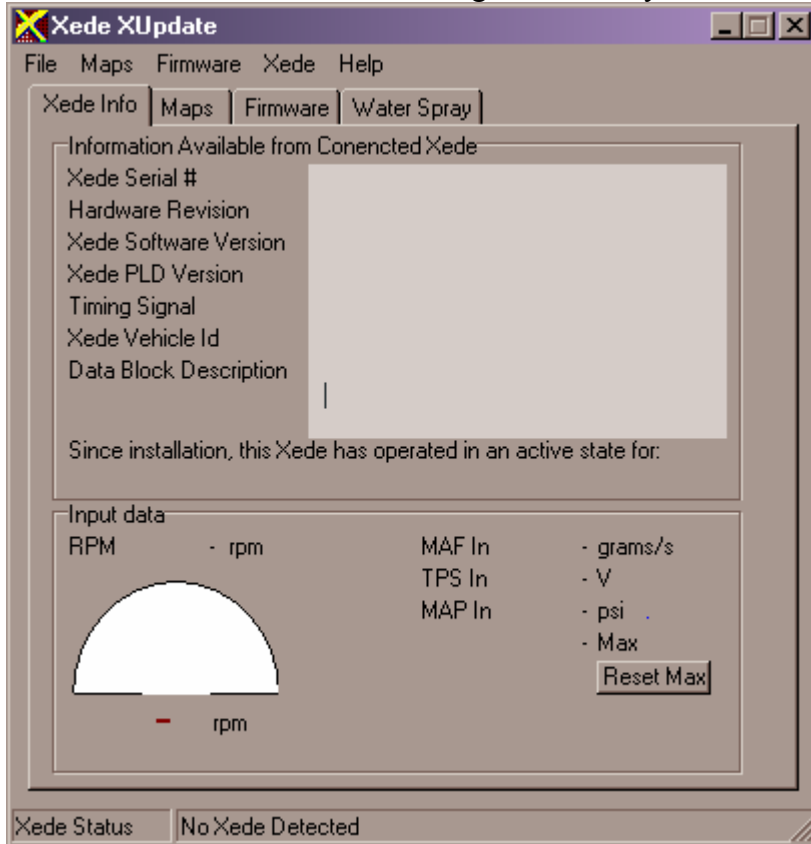


Step 4

Check communication with XEDE

Click on "Xede Info" tab. The following screen will appear. Within a couple of seconds, the blank space should fill up with a whole bunch of information. (If it does not, there is

no communication between the XEDE and laptop. If this is the case, check your connections and make sure that the ignition is fully on the “ON” position.)



Step 5

With communication established, you can now download the map file. Click on the “Maps” tab. This will take you back to the earlier window which displays your map file of choice. To upload the map file to the XEDE, click on “Go-Program Maps.” A small status bar may appear and will notify you when the programming and burning process is complete. Once complete, turn off the ignition, wait one second, and then start ‘er up again. You are ready to drive. During the initial test run, it is very important that you carefully monitor your engine’s performance. This means you should carefully listen for knock under boost. To do this, roll up your windows, turn off your radio and keep your ears wide open. Knock (also known as ping or detonation) sounds like random metallic rattling and is very destructive and harmful to your engine. It may only occur under boost and is eliminated by running higher octane fuels.

WARNING

As with all engine tuning systems, the user always accepts risk when trying different map files. It is up to the user to make sure he/she uses the appropriate map file. This means that it must be matched carefully to the given set of upgrades and available octane fuel. Failure to do so may result in poor engine performance or even severe engine damage. Please use your best judgment when using the XEDE. Like any powerful tool, it can be

misused as well as it can be used.